

HORIZONS

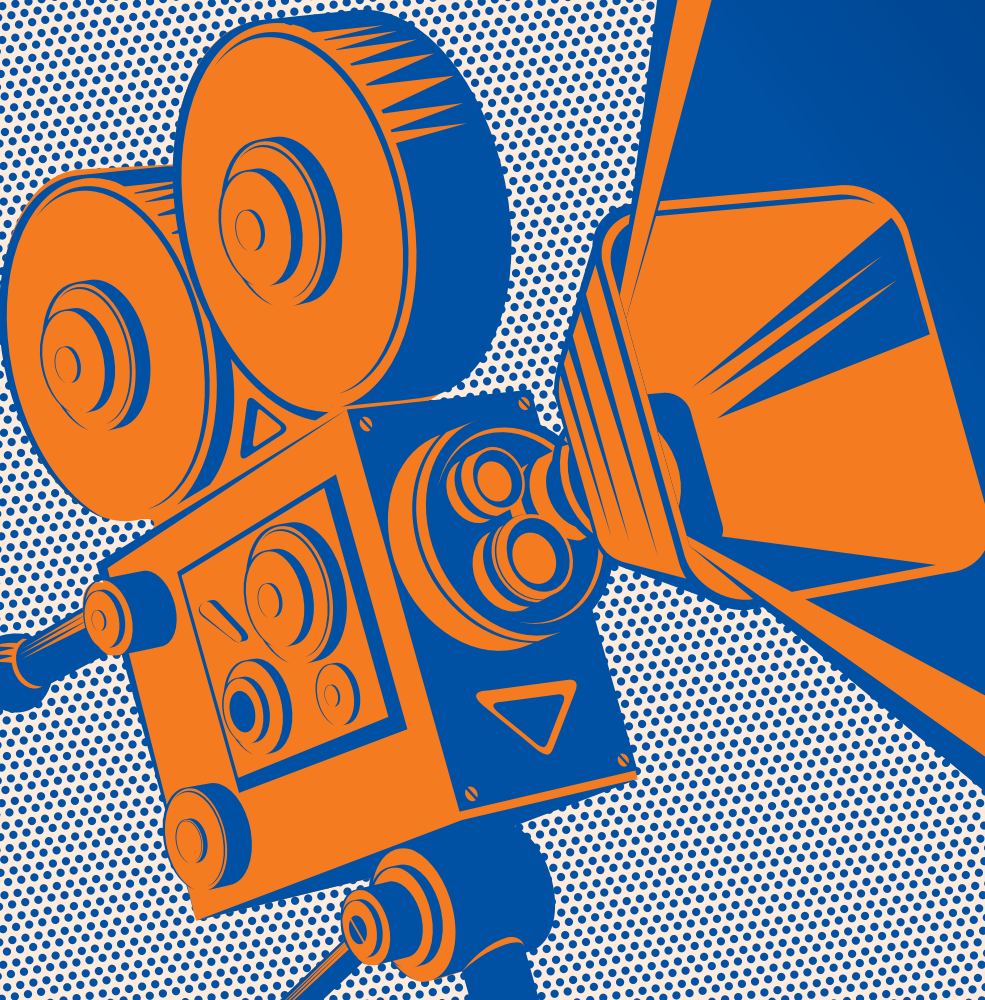
FALL 2025

**CELEBRATING
YOUR
BLOCKBUSTER
IMPACT**

**CHILDREN
WITH
DISABILITIES
LEARNING!**

**ADULTS
INDEPENDENTLY
LIVING!**

**THE
COMMUNITY
THRIVING!**



YOU HELP US EVEN THE ODDS

Letter from the President

Dear Friends,

Have you ever looked at the history of the word “handicapped”? We no longer use that word, as it is considered disrespectful, and there is a folk etymology that associates it with begging. The word actually comes from a 17th-century betting game where hands were placed into a cap with bets hidden—“Hand-in-Cap.” The idea was that the person with an advantageous position would be disadvantaged to level the playing field. Interestingly, this concept still applies today in golf: a “handicap” is used to equalize competition so players of all skill levels can compete more fairly.

The world we live in today was largely designed for people without disabilities, and little by little, we have been working for decades to create a more inclusive world for everyone. The opportunities I may have to succeed and live a happy, fulfilling life can look very different from those available to someone with a disability—such as a person who is autistic, has Down syndrome, or lives with quadriplegia.

If you follow our Facebook page, you may have noticed a recent video uploaded last month. It featured Suzanne Denu, a music therapist at Manchester Community Music School. Beaming with delight, Suzanne took us through every corner of the custom sensory room, showcasing the therapeutic purpose of each installation and piece of equipment.

CMF Kids provided resources for this space to ensure that children with autism and other disabilities have access to music in a way that meets their needs. Inclusive, adaptive design helps level the playing field—making music education accessible, equitable, and transformative for every child.

Without you, this remarkable place wouldn’t exist. These talented music-makers would not have a space like this to express their creativity in an environment designed to support their unique needs. We are thrilled to have partners like Manchester Community Music School and Concord Community Music School, who recognize that creative supports make a world of difference in the lives of these kids.

Every cent you give to CMF Kids goes directly toward making a difference in the lives of children and youth with autism and other disabilities throughout the state of New Hampshire. And our impact continues to broaden—and deepen!

As you’ll see in the pages that follow, we’ve just announced an additional \$1 million in partnership projects aimed at supporting academic, vocational, and social-emotional outcomes for children with disabilities from the Granite State’s most under-resourced schools.

We know we’re evening the odds of success when we hear from partners, teachers, and families. We are humbled by the chorus of “Thank you!”

Now that is impact that’s music to our ears.

Warm regards,



Ned Olney
President and CEO





EVERYONE DESERVES A SPORTING CHANCE

CMF Kids and UNH Partnering to Connect More Children with Disabilities to Sports and Recreation

CMF Kids and Crotched Mountain Foundation are partnering with the UNH Kinesiology Department to embark on a groundbreaking two-year research focusing on physical activity (PA) and sports participation among children with disabilities in our public schools.

“Between enhanced physical health and improved social and academic skills, the benefits of PA are wide-ranging,” says Melissa White, Executive Director of CMF Kids. “The unfortunate reality is that children with disabilities often face significant barriers for participation in physical activity and sports.”

Nationwide, children with disabilities are nearly five times less likely to engage in PA than their non-disabled peers. In New Hampshire, no population-level data currently exists on PA and sport participation among children with disabilities in our communities and schools. This research seeks to rectify that and generate actionable data.

“We hope to learn about how children with disabilities participate in physical education in New Hampshire public schools” said Ned Olney, President and CEO of Crotched Mountain Foundation. “The results of this never-before-done research will help schools and organizations include more children with disabilities into sports and physical activity.” ■

CMF Kids partners with New Hampshire schools and community organizations to improve social, emotional, and academic outcomes for children with disabilities.

Harry Gregg FOUNDATION

The Harry Gregg Foundation provides support grants to help New Hampshire residents with disabilities and their families cover the cost of needed products and services.

Learn more and apply at:
harrygreggfoundation.org/

THE FACE OF PHILANTHROPY

Kurt and Sarah Mailloux know firsthand how challenging it is to raise a child with autism—and how critical early intervention can be in helping children lead more independent and fulfilling lives. Twelve years ago, when their son Logan was diagnosed, they found much-needed support from the team at Ready, Set, Connect! where Logan received ABA therapy during the early stages of his autism journey.

However, during this time, Kurt and Sarah uncovered a troubling reality: many insurance providers were excluding autism therapies from coverage, placing strict limits on hours, or charging excessive copays.

Seeing so many families struggle to access essential care left a lasting impression on Kurt and Sarah—and inspired them to find a way to help.

Kurt owns and manages the stunning Akwa Marina on Lake Winnepesaukee along with his family. The marina features waterfront volleyball courts and a range of top-notch amenities, including a pool, a tiki bar, and more. In 2018, Kurt and Sarah launched the Winnepesaukee Volleyball Classic. Every June, dozens of volleyball teams from across New Hampshire come together—along with their friends

and families—for an action-packed tournament full of fun and community spirit.

Each year, the event crowns two champions: one team that wins the tournament, and another that raises the most in donations—proving that heart and hustle both take center court.

All proceeds from the Winnepesaukee Volleyball Classic support Logan's Giving Fund for Autism, part of Crotched Mountain Foundation. The fund helps families struggling with the high cost of autism therapy copays, and thanks to the generosity of the community, over \$40,000 has been raised in each of the past two years alone.

The cause is close to the hearts of many members of the Mailloux family. Kurt and Sarah lead and manage the event, while Sarah's sister, Amy Connolly, and her husband Nick organize and compete each year with their team, Team Fuller. Amy, principal attorney at Connolly Law in Bedford, also raised an additional \$28,000 last December through a fundraiser with the New Hampshire Association for Justice.

Kurt's siblings—Adam, Lance, and Shanna—are also deeply involved, whether by coordinating teams,

rallying donations, or both. For the Mailloux family, it's more than just a tournament—it's a mission to ensure that no family is denied care because of cost.

"Logan's Giving Fund for Autism is incredibly close to our hearts," said Sarah Mailloux. "Since 2018, Kurt and I have hosted this event in honor of our son Logan, who, as many of you know, has severe autism. With the support of our amazing community, we've raised hundreds of thousands of dollars and helped hundreds of families struggling to afford the essential services their children need. It means the world to us that so many people continue to stand behind this incredibly important cause."

"I've seen Crotched Mountain evolve to meet the changing needs of people with disabilities of all ages," Kurt says. "Their CMF Kids program reaches thousands of kids with disabilities every year. Our family and friends know that through the annual Winnepesaukee Volleyball Classic, and Crotched Mountain's Logan's Giving Fund for Autism, we're helping to bring opportunity and independence to kids with autism who need our help the most." ■

Consider supporting Logan's Giving Fund for Autism today at cmf.org/donate—just select Other in the online gift form and type Autism Fund.



THE MAILLOUXS:

CHAMPIONING KIDS WITH AUTISM IS A FAMILY TRADITION!



MICHELLE MAKES HER MOVE

With your support—and the expertise and compassion of CMCC case managers—one woman's journey from darkest depths finally sees some daylight.

"Crotched Mountain saved my life."

At the point in the conversation when Michelle made this statement, she had already wept twice. She was recounting the story of her life and, at times, the recall conjured waves of emotion. Some of these were tides of pain; others were memories of when people didn't give up on her.

Hers is a story fraught with devastating loss, debilitating addiction, life-stealing incarceration, miraculous recovery, abuse, cancer, homelessness, and more. So much more—a litany of life experiences that would crush most people under the weight of diabolical circumstances.

But the same steely, relentless stubbornness that led her down a few too many regrettable paths also kept her afloat in the midst of one typhoon after another. That, and the happy accidents of the right people coming to support her at just the right time, echoing the same refrain:

"Michelle, what are we going to do with you?"

"Before I was 24 years old, I had buried three of my children," Michelle says.

This unspeakable event became the flashpoint for a downward spiral that sucked Michelle into an emotional void she spent nearly her entire adult life trying to escape. The trauma of this loss led to a lifelong struggle with addiction and abuse—a shocking contrast to her previous life as a registered nurse. Seemingly every negative situation cascaded, compounding on each other until finally, it all came crashing down.

"Addiction was my way of keeping my heart from shattering every morning for the rest of my life," she says. "I used substances to numb my heart pain, to dull it. And they took me right to the New Hampshire State Prison for Women."

Which is where she stayed for just under a decade. And even after she left, she couldn't shake her

demons. She would be in and out of treatment centers, but eventually relapse and fall victim to her addiction once again.

It wasn't until 2019 when she finally clawed out of this pit. She had entered an intensive transition/detox program, where she received the support she needed. It was an emotional breakthrough for her—the recounting of which brought her to tears—and provided the purchase she needed to help move past her grief and shake her addiction.

For the first time in over 20 years, she was clean.

But she was also homeless. And had been diagnosed with epilepsy as well as several other medically complex health ailments. It was truly one thing after the other.

She relied on the basements and couches of family members. At this point, she had qualified for CFI (Choices for Independence), the Medicaid program that supports lower-income adults with disabilities. Through CFI, she became a client of Crotched Mountain Community Care. Becky, her case manager, immediately knew the pressing issue: help Michelle find safe, stable housing.

“Community Care is all about ensuring our clients can remain independent, in the community, and out of nursing homes,” said Kara Nickluas, Executive Director of Adult Services for Crotched Mountain Foundation. “Michelle’s chronic illness and mental health challenges made her a perfect fit for our services. In fact, we have seen more and more mental health needs in our clients year after year.”

Indeed, CMCC has followed Crotched Mountain Foundation’s ongoing focus to address the most pressing needs of the day. As chronic illness and mental health challenges escalate in New Hampshire, the CMCC crew has adapted to harness the resources and has received appropriate training (all case managers have been trained in mental health support) to better serve their clients.

“This is the reality of our client base,” Kara says. “They are getting younger and their needs are more complex. Thanks to our dedicated staff and the generosity from Crotched Mountain supporters, we have been able to work towards helping our clients live on their own and thrive in their communities.”

Just ask Michelle, who—thanks to the tireless work of Becky and Carol, her CMCC case managers—moved into her own apartment in May 2025 and received the community services to keep her stable and independent.

“They have been amazing,” Michelle says. “To finally be in my own studio apartment, I get emotional thinking about everything I had to do. I did the work. I did the time. I was patient. I didn’t give up.”

Michelle, what are we going to do with you?

Answer: Watch you succeed. ■



THIS IS BIG!

CMF Kids Invests \$1 Million
to Support Students with
Disabilities in the Communities
of Greatest Need



Your generous support impacts more children with autism and
other disabilities in the communities of greatest need

Crotched Mountain Foundation has partnered with a new cohort of New Hampshire schools from under-resourced communities to improve special education for children with complex disabilities—to the tune of \$1 million.

Crotched Mountain's groundbreaking CMF Kids initiative collaborates with schools to improve special education, with a focus on enhancing academic, vocational, and recreational outcomes for students. Projects address priority needs of special education students including infrastructure improvements, curriculum and staff development, and adaptive recreation equipment.

The 2025–2028 school partners are:

Lisbon School District

Post secondary readiness program for students with disabilities

The purchase of a wheelchair accessible van with a lift

Colebrook, Stewartstown, Pittsburg District

Professional development focused on trauma-informed care, co-teaching, and Registered Behavior Technician (RBT) certification

Infrastructure renovations for accessibility

Pittsfield School District

New curriculum implementation

Playground renovations to improve accessibility

Conway School District

Professional development training across all disciplines for leading cultures of inclusion

Northumberland, Stratford, and Stark School District

Implement the “Bookworms Reading Curriculum” for students with disabilities

Infrastructure improvements to increase accessibility

With these new districts, CMF Kids will have partnered with 18 school districts from across New Hampshire. CMF Kids is fully funded by public and private donations, with every dollar given going directly to the awarded partners.

“Crotched Mountain Foundation and CMF Kids have shown that real and enduring change are possible through innovative collaborations,” said Ned Olney, President and CEO of Crotched Mountain Foundation. “We are excited to pursue these new partnerships, all with the laser focus on helping kids with disabilities in our public schools today, while building improved special education for the kids that come tomorrow.”

To learn more about CMF Kids
please visit cmfkids.org.



Beth Vincent at one of the recent MSA open houses

A Chat with Anita Briggs, Affordable Housing Manager

A SPECIAL PLACE TO LIVE AND WORK



Social gatherings are a common occurrence at MSA—especially during the holidays.

There's a gem in the heart of Whitefield, NH's downtown just up the street from the Triangle Dairy Bar...if you know you know! Welcome to McIntyre School Apartments, a unique building that once served as a school and now fulfills an important community purpose.

McIntyre School Apartments (MSA) offers safe, quality, accessible residential living for low-income seniors aged 62 and over. The 24 apartments are subsidized by the Department of Housing and Urban Development (HUD) and managed by Crotched Mountain Foundation. MSA is one of three apartment complexes, with the other two located in Portland, ME and East Greenbush, NY.

The staff and residents have created a warm, inclusive community at MSA. The shared goal for everyone who spends their days in this special place is, as long-time Maintenance Technician Ken LeBrun says: "We strive to make MSA a special place to live or work."

"The tenants have a strong sense of community," says Cory Jackson, Occupancy Coordinator (and resident piano player) for MSA. "It is so great to be a part of that."

Beth Vincent, another team member, brings 24 years of experience and works as a Service Coordinator for the tenants. In addition to pulling together community resources to support MSA residents, Beth has also spearheaded special groups like the gardening club and the outings club.

"I enjoy taking on challenges with the tenants and making a difference, meeting needs, investing in the lives of others," she says. "The McIntyre community has always been a place I have felt welcomed, and it's been a privilege to be a part of it for so many years. Every day brings something new." ■

How long have you been with MSA?

I've been with CMF for just over a year, serving as the Affordable Housing Manager. While I'm still relatively new to the team, I bring over seven years of experience in the affordable housing field and more than 15 years in the not-for-profit sector. This work has become a true passion of mine; there's a lasting sense of purpose in what we do every day.

What is your role?

As the Affordable Housing Manager, I help ensure that our tenants have access to safe, high-quality, and genuinely affordable places to call home. My role touches on many aspects of daily operations, such as compliance, asset management, and troubleshooting challenges as they arise. I work closely with our team, community partners, and tenants to make sure everything runs smoothly and compassionately.

What do you like most about the work you do?

Growing up in Whitefield, NH, I've always felt a strong pull to give back to the communities I care about. There's real pride in knowing that my work directly supports the people and places I call home. The most fulfilling part of this work is knowing it has a real and lasting impact. Housing is foundational. When people have a stable place to call home, it opens the door to better health, stronger families, and a greater sense of security. I also genuinely enjoy problem-solving; no two days are the same, and I'm constantly learning.

What is something you think people should know about living or working at MSA?

McIntyre School Apartments isn't just a senior housing development—it's a home, a community, and a family. It's a place where tenants can feel safe, empowered, and supported. We encourage active participation through groups like the Garden Club and Activities Committee, and we offer weekly events like Wednesday Bingo and Friday breakfast that bring everyone together.

MSA is a reminder that community starts at home. It's a place where our elders can find not only stability, but also connection, dignity, and joy. ■

SNAPSHOTS



THIS VACATION "ROCKED"

The Crotched Mountain Enhanced Family Care (EFC) program matches adults with disabilities with providers who welcome them into their home. Mauricio and Tulia are a sterling example of the power of this program!

Long-time EFC providers, Mauricio and Tulia took their clients Jason and Kayla (along with their daughter) to Las Vegas for a fun-filled excursion out west.

The crew journeyed to Grand Canyon National Park and visited the canyons in Arizona and Utah as well. Then it was off to the Hoover Dam, Las Vegas strip, Madame Tussaud's Wax Museum, and, finally, a Shakira concert capping off the adventure.



Now THAT is how you do life together! Learn more about Enhanced Family Care at cmf.org/efc. ■

OUR VOLUNTEERS HAVE BLOOMING IMPACT

This past June, volunteers from the Appalachian Mountain Club joined the UNH Master Gardeners to clean and beautify the Crotched Mountain Accessible Trails and Memorial Garden in Greenfield. We're always looking for volunteers! If you have a passion for giving back to the community and enjoying the outdoors please contact us at development@crotchedmountain.org. ■



ANOTHER CLASSIC VOLLEYBALL CLASSIC



Despite the rain, the Sixth Annual Winnepesaukee Volleyball Classic at Akwa Marina Yacht Club was another big hit. Over 20 teams and sponsors raised \$40,000 to help children with autism, providing much-needed funds for Logan's Giving Fund for Autism. ■



186 Granite Street, Suite 3C
Manchester, NH 03101
crotchedmountain.org

Horizons Fall 2025

NONPROFIT
ORGANIZATION
US POSTAGE
PAID
MANCHESTER NH
PERMIT NO. 724

CROTCHED MOUNTAIN THROUGH THE YEARS

When Harry Met Ezra

Sometime around 1920, Crotched Mountain Foundation founder Harry Gregg met Dr. Ezra Jones, the son of a Connecticut tavern keeper who rose from a modest background and studied at the University of Tennessee and at Johns Hopkins Medical School in Baltimore, Maryland.

Dr. Jones fought in World War I, where he witnessed firsthand the casualties and consequences of battle. The unprecedented number of disabilities that arose from this great conflict inspired Dr. Jones to pursue orthopedics as a medical discipline. After the war, he became the first orthopedic specialist in New Hampshire.

As demand grew for Dr. Jones's expertise, more and more community clinics were needed throughout the state. Harry Gregg was one of the key supporters in organizing and sustaining one such clinic in Nashua.

In 1936, Harry Gregg and Ezra Jones were instrumental in founding the New Hampshire Society for Crippled Children—an outdated name, to be sure, and an artifact of its time. Eventually, the society adopted the name Crotched Mountain Foundation in the 1950s.

And the rest is history...



Ezra Jones, M.D.